



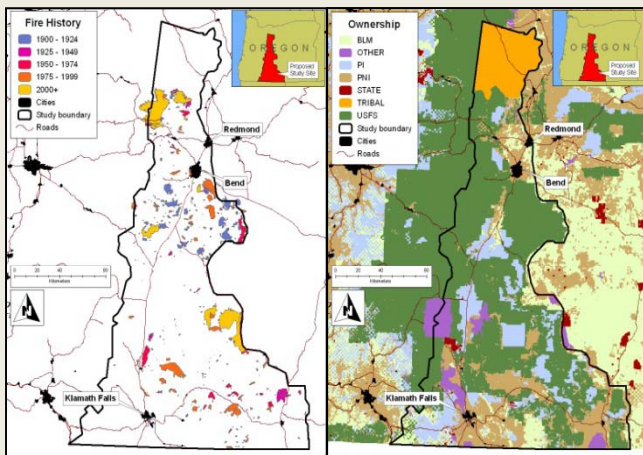
Forests People Fire Future:

Agent-based modeling and social network analysis

Grad Students!
New seminar course

FOR 507/607 (1 credit), CRN: 39284/39285
Winter 2011, 11:00-12:00 on Fridays, Peavy 224

We will examine the challenges of modeling coupled human and natural systems, with a focus on using agent-based models and social network analysis. Guest speakers will participate in about half of the meetings; all faculty, staff, and students are welcome to participate on those dates with guest speakers.



Confirmed guest speakers:

- Drs. Jessica Leahy and Eli Lazarus, University of Maine
- Dr. Max Nielson-Pincus, University of Oregon
- Several scientists from the Forests People Fire project

This seminar is funded by a National Science Foundation Coupled Natural-Human Systems grant.

The [Forests People Fire](#) project is an interdisciplinary endeavor by scientists from the PNW Research Station, WWETAC, and the OSU Departments of Biological and Ecological Engineering, Forest Ecosystems & Society, Forest Engineering, Resources & Management, Sociology, Political Science, and the Institute for National Resources.